

<How to set 3DWOX in Cura> (DP200, 3DWOX1, 1X, 2X, 7X)

1. Install Cura. (Version: Cura 4.5 or later)

(<https://ultimaker.com/software/ultimaker-cura>)

2. Download the "Cura_Settings.zip" from download page.

(<https://3dprinter.sindoh.com/support/downloads>)

3. Unzip the "Cura_Settings.zip".

You will see 5 folders and DisplayInformationIn3DWOX.py.

C > D:₩ > Cura_Settings >

이름

- definitions
- extruders
- materials
- meshes
- quality
- DisplayInformationIn3DWOX.py

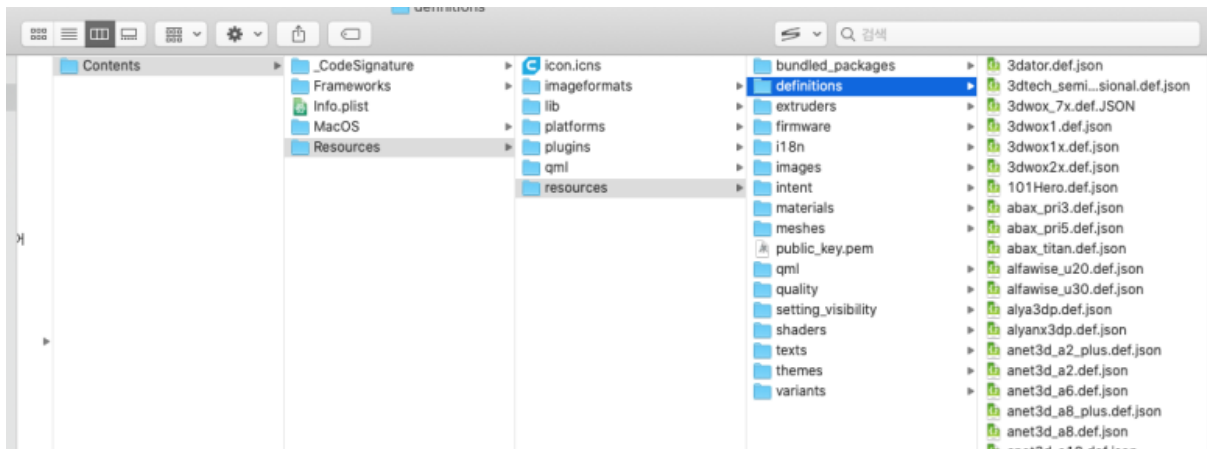
4. Copy those 5 folds on resources folder of Cura.

C > WIN10 (C:) > Program Files > Ultimaker Cura 4.6 > resources

이름

- bundled_packages
- definitions
- extruders
- firmware
- i18n
- images
- intent
- materials
- meshes
- qml
- quality
- setting_visibility
- shaders
- texts
- themes
- variants
- public_key.pem

(In Mac) resources folder is under the Contents folder.
Copy those 5 folds on resources folder.



5. Copy 'DisplayInformationIn3DWOX.py' on 'plugins#PostProcessinPlugin#scripts' folder of Cura.

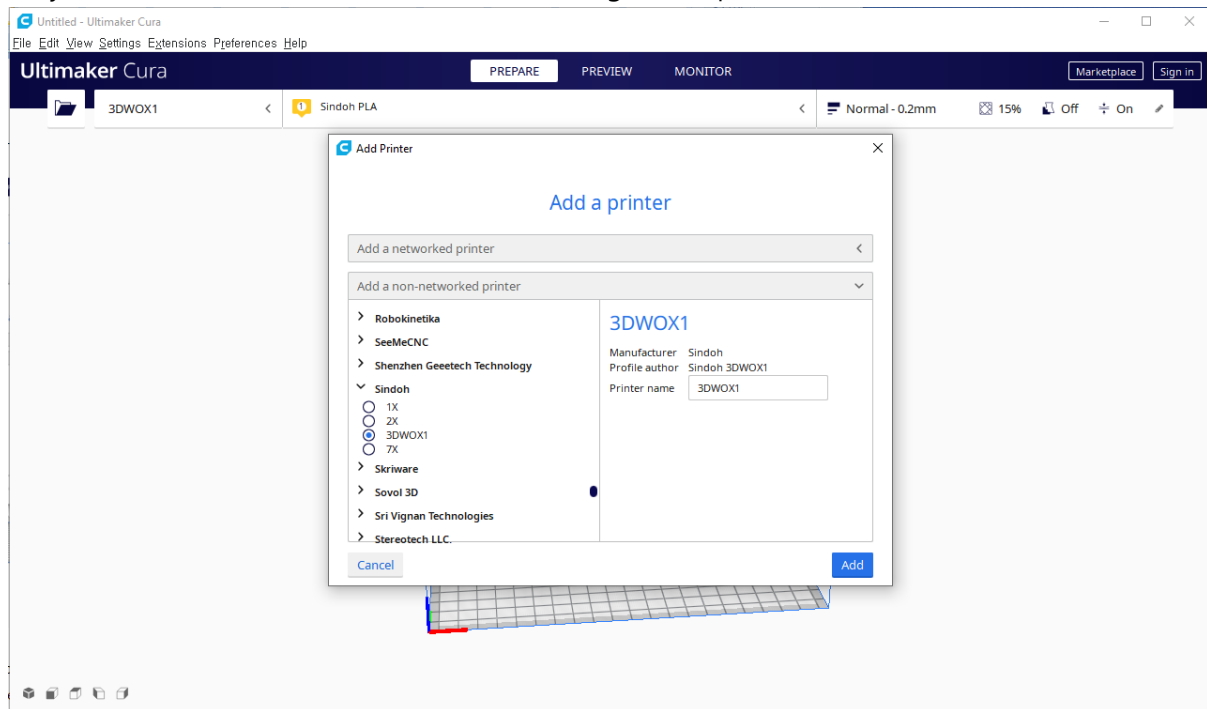
C > WIN10 (C:) > Program Files > Ultimaker Cura 4.6 > plugins > PostProcessingPlugin > scripts

이름

- BQ_PauseAtHeight.py
- ChangeAtZ.py
- ColorMix.py
- DisplayFilenameAndLayerOnLCD.py
- DisplayInformationIn3DWOX.py
- DisplayRemainingTimeOnLCD.py
- ExampleScript.md
- FilamentChange.py
- InsertAtLayerChange.py
- PauseAtHeight.py
- PauseAtHeightforRepetier.py
- PauseAtHeightRepRapFirmwareDuet.py
- RetractContinue.py
- SearchAndReplace.py
- Stretch.py
- TimeLapse.py
- UsePreviousProbeMeasurements.py

6. You can select Sindoh printer in Add printer.

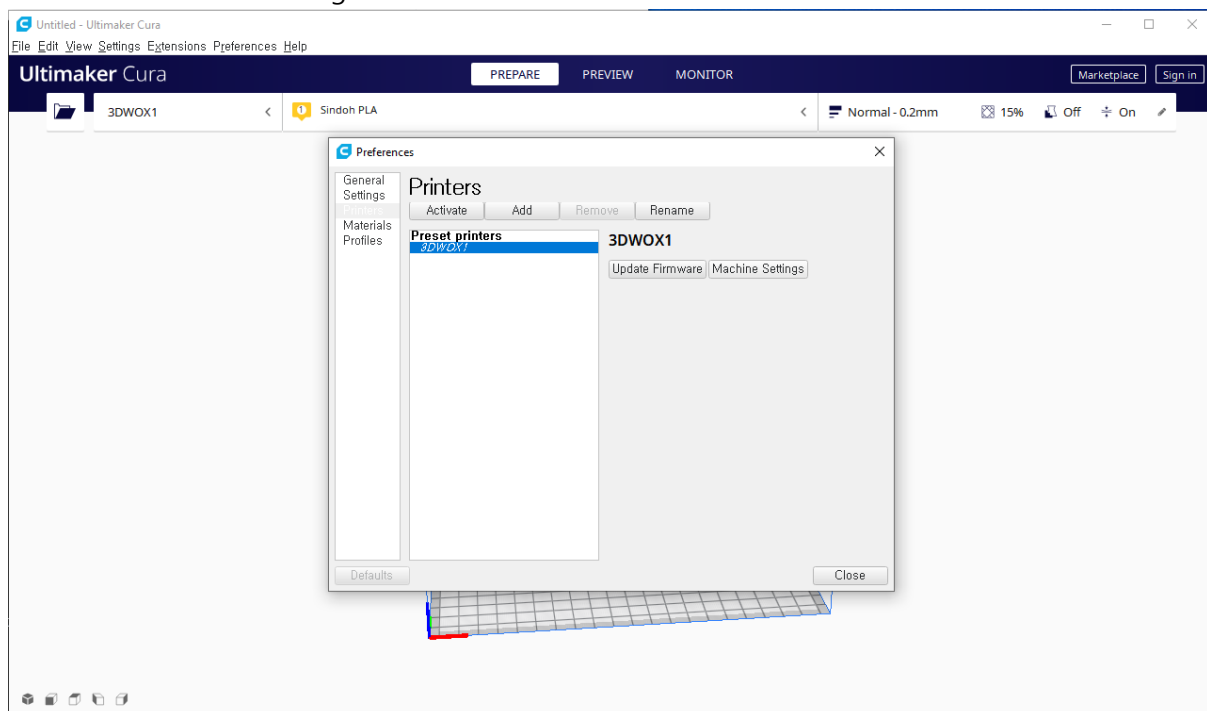
(If your machine is DP200, select 3DWOX 1 and go to step 6-1.)



**If you see Configuration error after updating the Cura, click the Reset button to remove the previous version profile. And overwrite the 5 folder onto new Cura's resource folder again. (Step 4)

6-1. (If your machine is DP200) Go to Preference and select Printers on left panel.

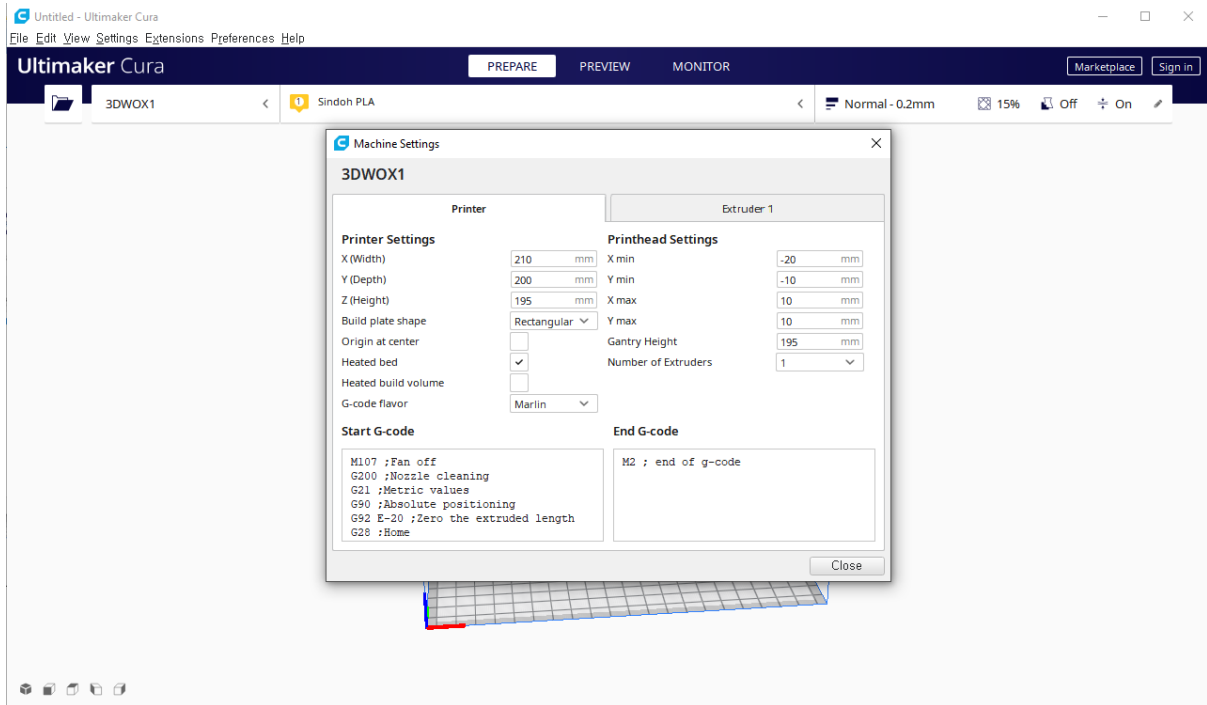
And click Machine Settings.



Change X(width) from 210 to 200

Y(Depth) from 200 to 200

Z(Height) from 195 to 185



[Appendix] How to set Sindoh Flexible (1X, 2X, 7X)

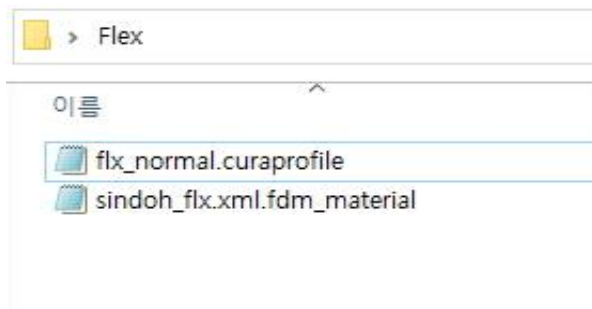
If you want to use Sindoh flexible,

1. Download the Flex.zip.

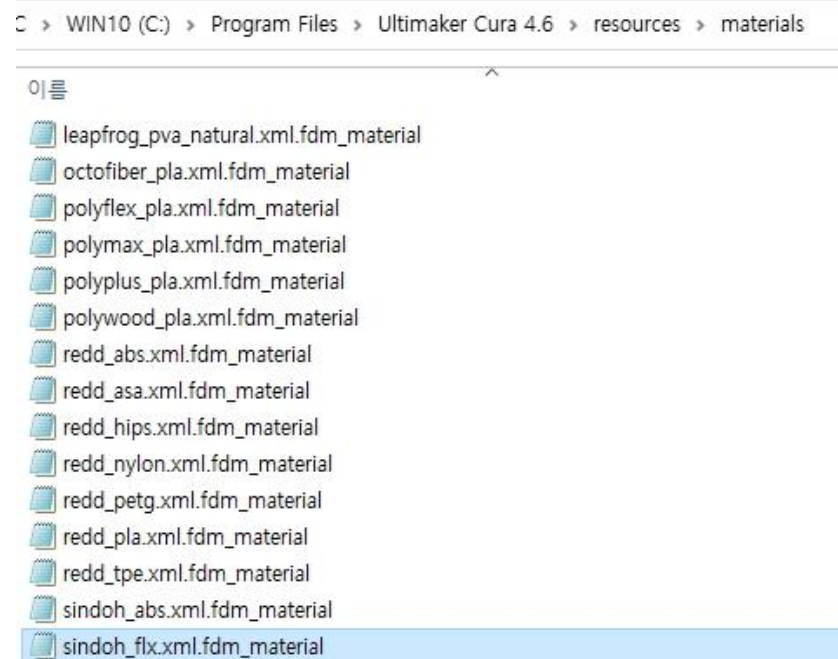
(<https://3dprinter.sindoh.com/support/downloads>)

2. Unzip the "Flex.zip".

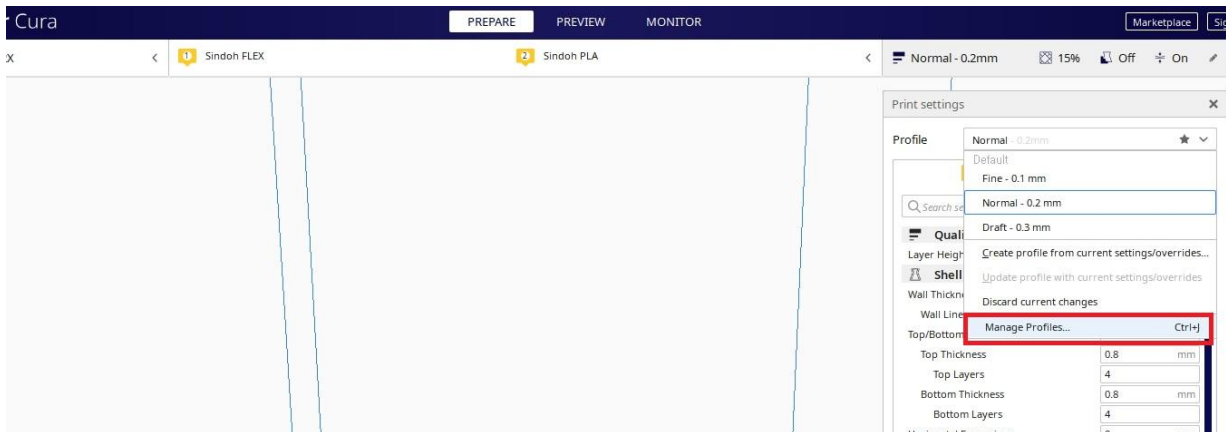
You will see flx_normal.curaprofile and sindoh_flx.xml.fdm_material.



3. Copy flx_normal.curaprofile on resources\material folder of Cura.



4. In Cura, select Manage Profiles under Print settings.



5. Import the flx_normal.curaprofile.
(You can move this file to any folder before Import.)

