

DP200 Series(B Type)

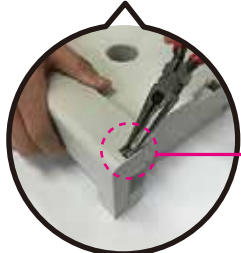
Cartridge Refill Manual

更换料丝作业指南

카트리지 Refill 설명서

- ※ The chip **MUST** be replaced along with the spool when replacing the cartridge. Please **DOUBLE-CHECK** that the chip matches the corresponding filament.
- ※ 更换料盘时, 请**一定要**同时更换芯片。另外, 请**再次确认**芯片与料丝是否匹配。
- ※ 필라멘트를 교체할 때 동봉된 스마트칩으로 교체하십시오.
- Please buy a new cartridge if its rubber roller wears out.
- 料盒多次填充料丝使用后, 料盒的橡胶辊会有一定程度的磨损, 为不影响使用, 请购买新的料盒。
- Refill용 필라멘트를 반복해서 사용할 경우 카트리지의 고무롤러가 손상될 수 있으니 카트리지를 구매하여 주십시오.

1 Disassembling the Hook/解除卡扣/후크 분해



Disassemble 4EA Hooks
解除4处卡扣
4개소 후크 분해

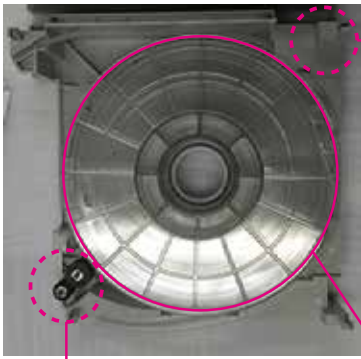


SmartChip position
芯片位置
스마트칩 위치

2 Disassembling the SmartChip/拆除芯片/스마트칩 분해



3 Assembling/Disassembling of used filament, rubber roller and desiccant/ 拆装料丝, 橡胶辊, 干燥剂/사용한 필라멘트, 고무 롤러, 제습제의 분해, 조립



Desiccant
干燥剂
제습제

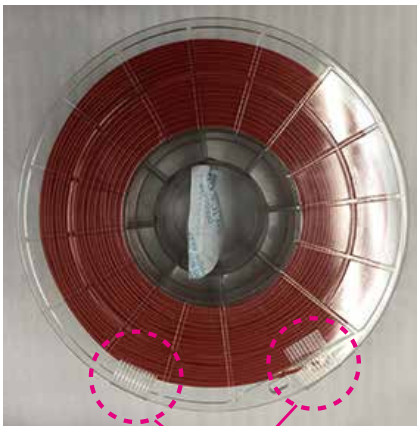
Remove (2EA)
rubber rollers
拆除2个橡胶辊
고무 롤러(2개) 분해

Remove used filament
取下料丝已耗尽的卷盘
사용한 필라멘트 제거

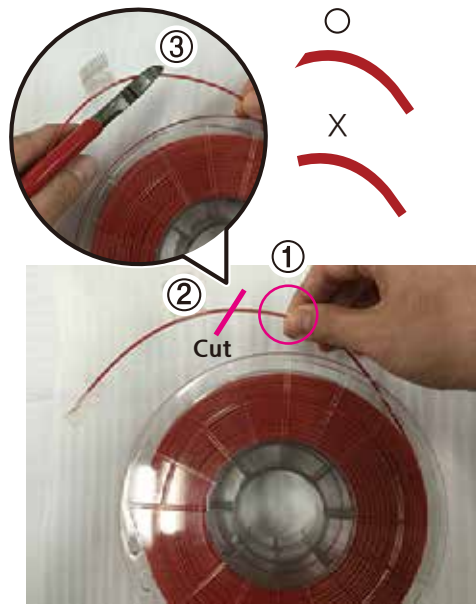


Discard the desiccant, and replace it with the new desiccant that comes with the new filament.
丢弃料盒内的干燥剂, 换上新材料丝包装内的干燥剂.
들어있는 제습제를 버리고 새 필라멘트에 들어있는 제습제로 교체.

4 Filament Preparations/准备料丝/필라멘트 준비



Remove tape(2EA)
撕下胶带(2处)
테이프 제거(2개소)



① Holding the filament section ② Cut ③ Cut in the diagonal direction.
抓住①位置, 在②处剪断料丝。如图所示倾斜方向剪断料丝(③)。
① 부분을 잡은 상태로 ②를 Cut 할 것. 대각선 방향으로 Cut(③).

Place the filament in the same direction alike to the image, hold onto the coherent section and "NEVER" let go. Letting go of the filament will uncoil the filament and can make the filament to tangle during print.

如图所示摆放料丝, 抓住该位置不可放手。如果放手, 料丝松弛可能会导致绕线问题。

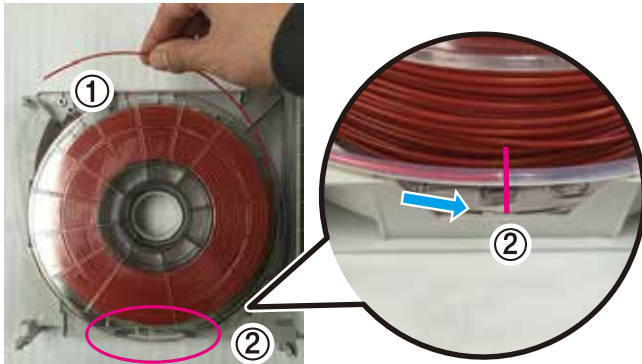
필라멘트를 사진과 같은 방향으로 놓고 해당 부분(①)을 잡고 "절대" 놓치지 말것. 놓칠 경우 필라멘트가 풀리며 꼬일 수 있음.

5 New Filament Replacement/更换新料丝/신규 필라멘트 교체

Assemble in the same direction as the "4.Filament Preparation".

按照“4. 准备料丝”的作业方向继续进行组装。

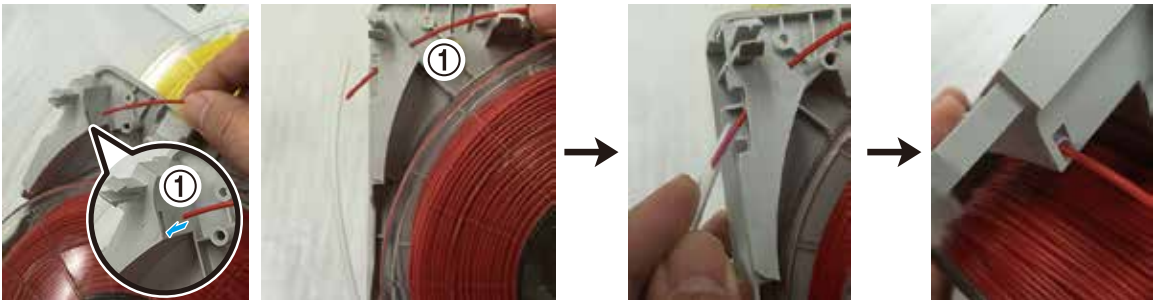
"4. 필라멘트 준비"에서 작업한 방향 그대로 조립.



Push the filament that is in the tube until it reaches the marked section as shown in the image(②).

请将软管内的料丝推入至此位置(②)。

튜브 속 필라멘트를 해당 부분까지 밀어 넣을 것(②).



Place the filament into the appropriate entrance.

将料丝穿入图示方形孔。

필라멘트를 해당 구멍에 넣을 것.

Place the filament into the tube.

将料丝插入软管中。

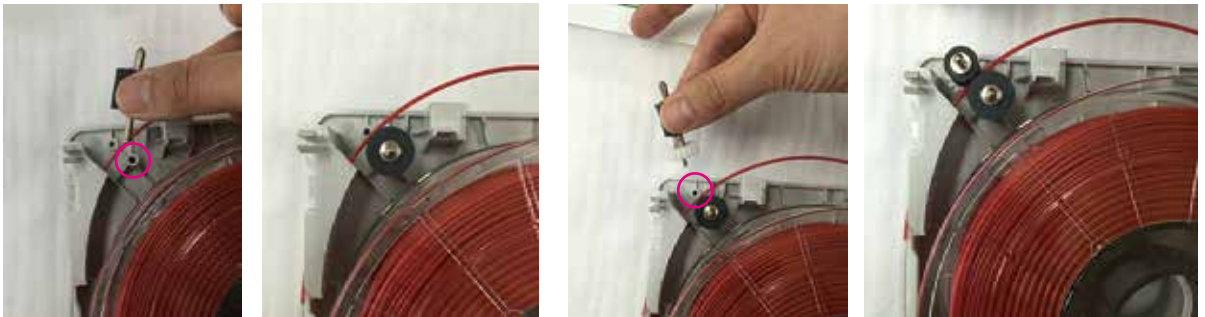
튜브에 필라멘트를 넣을 것.

Assembled image

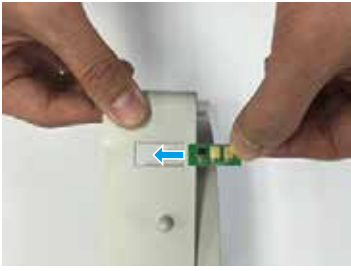
组装效果图

조립된 그림

6 Assembling the Rubber Rollers/组装橡胶辊/고무 롤러 조립

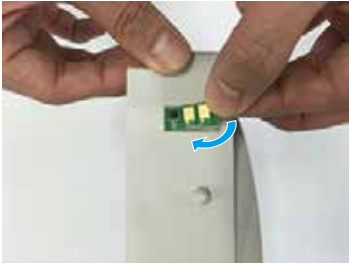


7 Assembling Smart chip/组裝芯片/스마트칩 조립

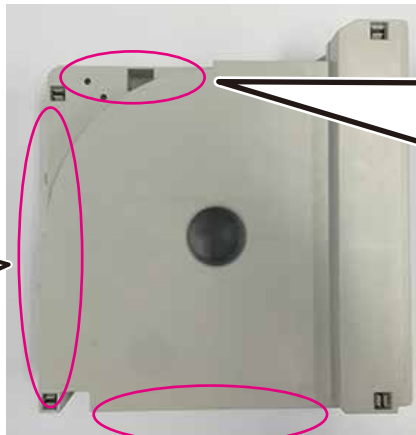


Attention! Please check the direction of the smartchip, if not installed properly, smartchip will not be recognized by the printer.

注意方向! 反向组裝时无法识别。
방향 주의! 거꾸로 조립시 인식 안됨.



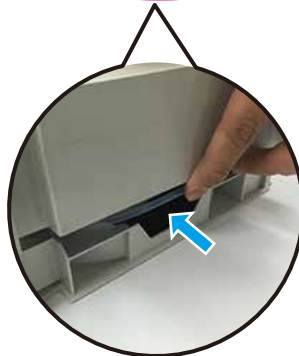
8 Assembling the Cover/组裝外壳/커버 조립



Push the tube and filament inside the cartridge during assembly.

组裝外壳时要將软管及料丝推入盒内。

튜브 및 필라멘트를 카트리지 안쪽으로 밀어주면서 조립.



(RDP13581B)