

<How to set 3DWOX in Cura> (DP200, 3DWOX1, 1X, 2X, 7X)

1. Install Cura. (Version: Cura 4.5 or later)

(<https://ultimaker.com/software/ultimaker-cura>)

2. Download the "Cura_Settings.zip" from download page.

(<https://3dprinter.sindoh.com/support/downloads>)

3. Unzip the "Cura_Settings.zip".

You will see 5 folders and DisplayinformationIn3DWOX.py.

C > D:₩ > Cura_Settings >

이름

definitions
extruders
materials
meshes
quality
DisplayInformationIn3DWOX.py

4. Copy those 5 folds on resources folder of Cura.

C > WIN10 (C:) > Program Files > Ultimaker Cura 4.6 > resources

이름

bundled_packages
definitions
extruders
firmware
i18n
images
intent
materials
meshes
qml
quality
setting_visibility
shaders
texts
themes
variants
public_key.pem

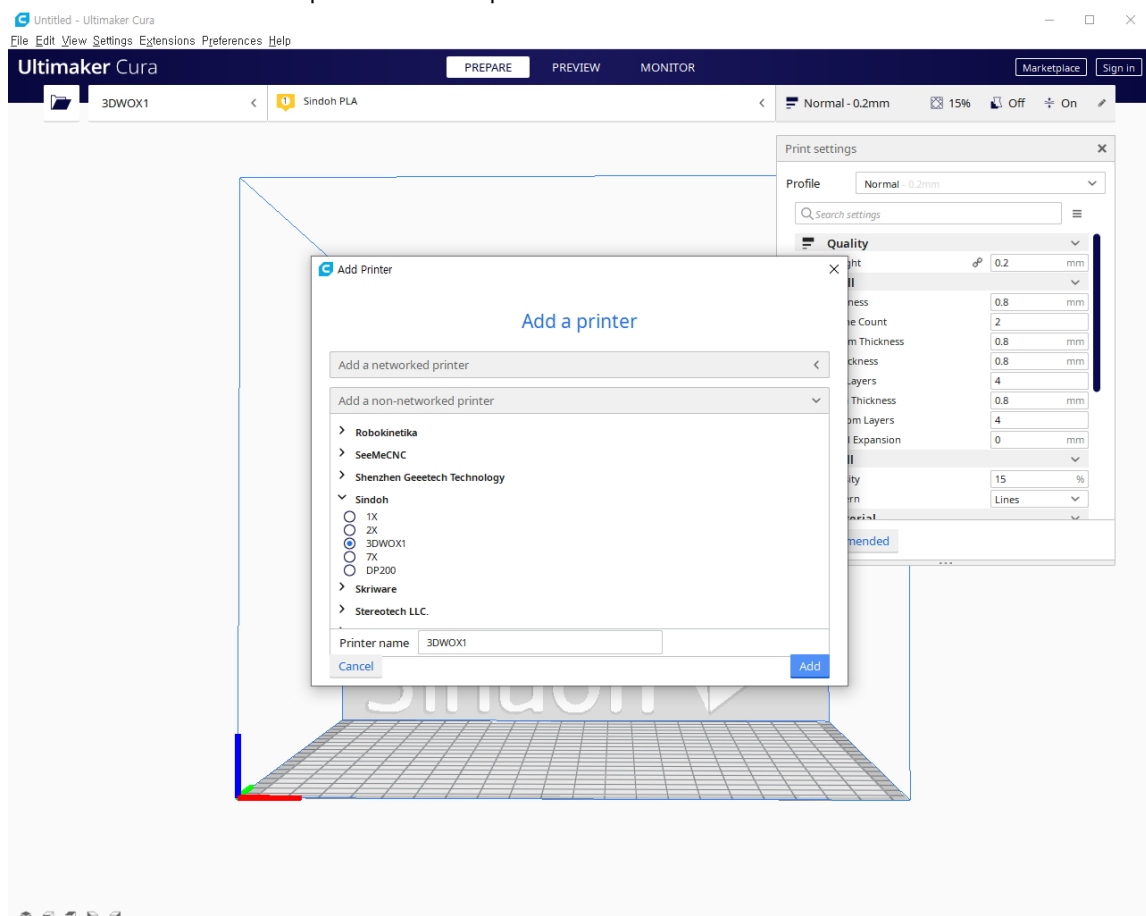
5. Copy 'DisplayInformationIn3DWOX.py' on 'plugins\PostProcessingPlugin\scripts' folder of Cura.

C > WIN10 (C:) > Program Files > Ultimaker Cura 4.6 > plugins > PostProcessingPlugin > scripts

이름

- BQ_PauseAtHeight.py
- ChangeAtZ.py
- ColorMix.py
- DisplayFilenameAndLayerOnLCD.py
- DisplayInformationIn3DWOX.py
- DisplayRemainingTimeOnLCD.py
- ExampleScript.md
- FilamentChange.py
- InsertAtLayerChange.py
- PauseAtHeight.py
- PauseAtHeightforRepetier.py
- PauseAtHeightRepRapFirmwareDuet.py
- RetractContinue.py
- SearchAndReplace.py
- Stretch.py
- TimeLapse.py
- UsePreviousProbeMeasurements.py

6. You can select Sindoh printer in Add printer.



[Appendix] How to set Sindoh Flexible (1X, 2X, 7X)

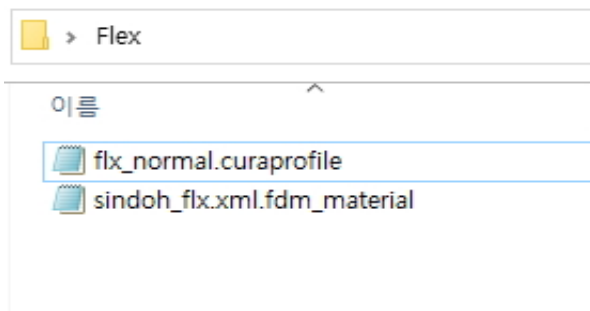
If you want to use Sindoh flexible,

1. Download the Flex.zip.

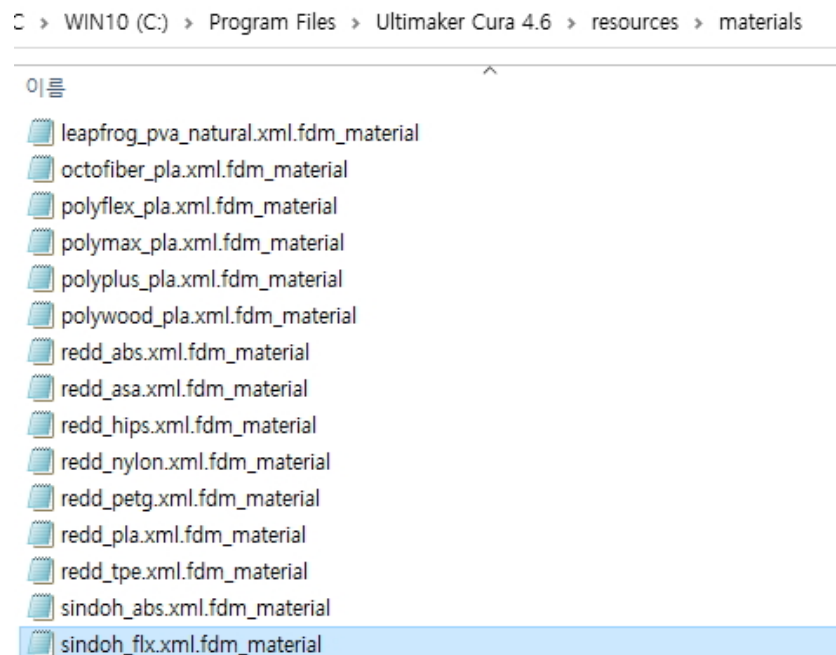
<https://3dprinter.sindoh.com/support/downloads>

2. Unzip the "Flex.zip".

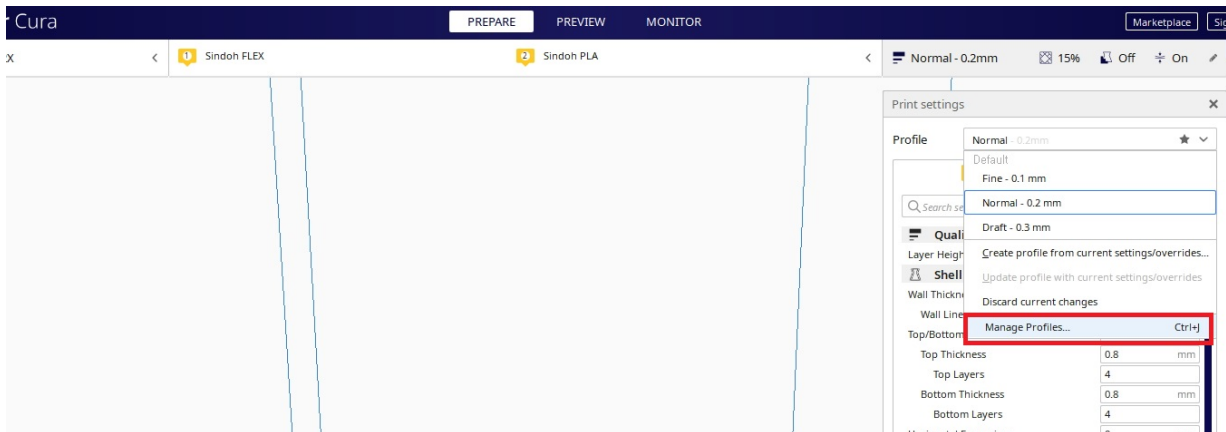
You will see flx_normal.curaprofile and sindoh_flx.xml.fdm_material.



3. Copy flx_normal.curaprofile on resources\material folder of Cura.



4. In Cura, select Manage Profiles under Print settings.



5. Import the flx_normal.curaprofile.
(You can move this file to any folder before Import.)

